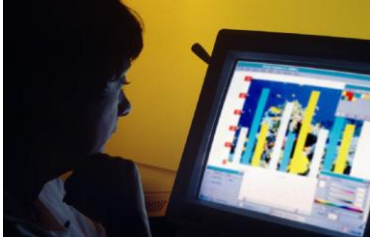


# Test Up Test Out Of Development Classes



**EKU**

*Come Here... Go Anywhere!*

Clay County  
Adult Education Program  
Eastern Kentucky University  
College of Education

**Move  
Up**

# EKU

# SESSION

If you are currently enrolled in 090 or 095 MAT or ENG classes –

## THIS IS FOR YOU!

EKU students will:

- Work with a certified instructor in math or language arts to develop skills in math and/or language, (i.e., student will attend class meetings & complete HW assignments over the next 4-6 weeks to develop skills)
- Post-test with the EKU Adult Ed program to demonstrate your academic gain in math and/or language
- Arrange for a Placement Test with the EKU Testing Office
- Once you “test up” or “test out” of either a 090 or a 095 class, you will then be able to revise your schedule and move on to the next level of class needed (such as, MAT 105 or ENG 101, etc.)

Call **599-1230** to get started today!!

**FREE for  
EKU  
Students**

## KENTUCKY Adult Education



*Your future starts here!*

Like us on Facebook: [www.facebook.com/ekumadisoncountvadulteducation](http://www.facebook.com/ekumadisoncountvadulteducation)

Provided by

### EKU-Clay County Adult Education Program

University Drive • Manchester, KY

## Phone 606-599-1230



Eastern Kentucky University is an Equal opportunity/Affirmative Action employer and educational institution and does not discriminate on the basis of age (40 and over), race, color, religion, sex, sexual orientation, disability, national origin, veteran status, or genetic information in the admission to, or participation in, any educational program or activity which it conducts, or in any employment policy or practice. Any complaint arising by reason of alleged discrimination should be directed to the [Equal Opportunity Office](#), Eastern Kentucky University, Jones Building, Room 106, Coates CPO 37A, Richmond, Kentucky 40475-3102, (859) 622-8020 (V/TDD), or the Director of the Office for Civil Rights, U.S. Department of Education, Philadelphia, PA.